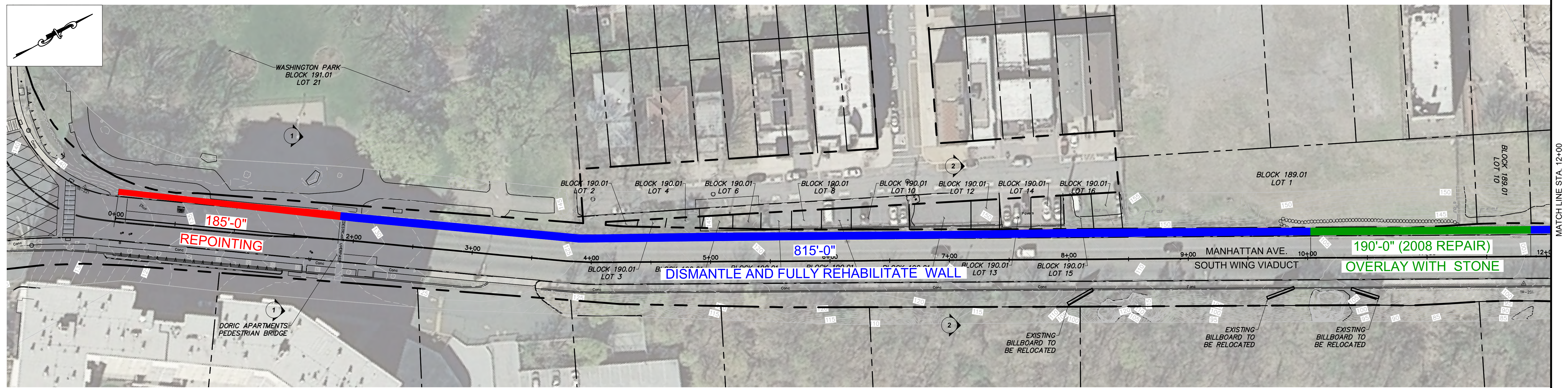
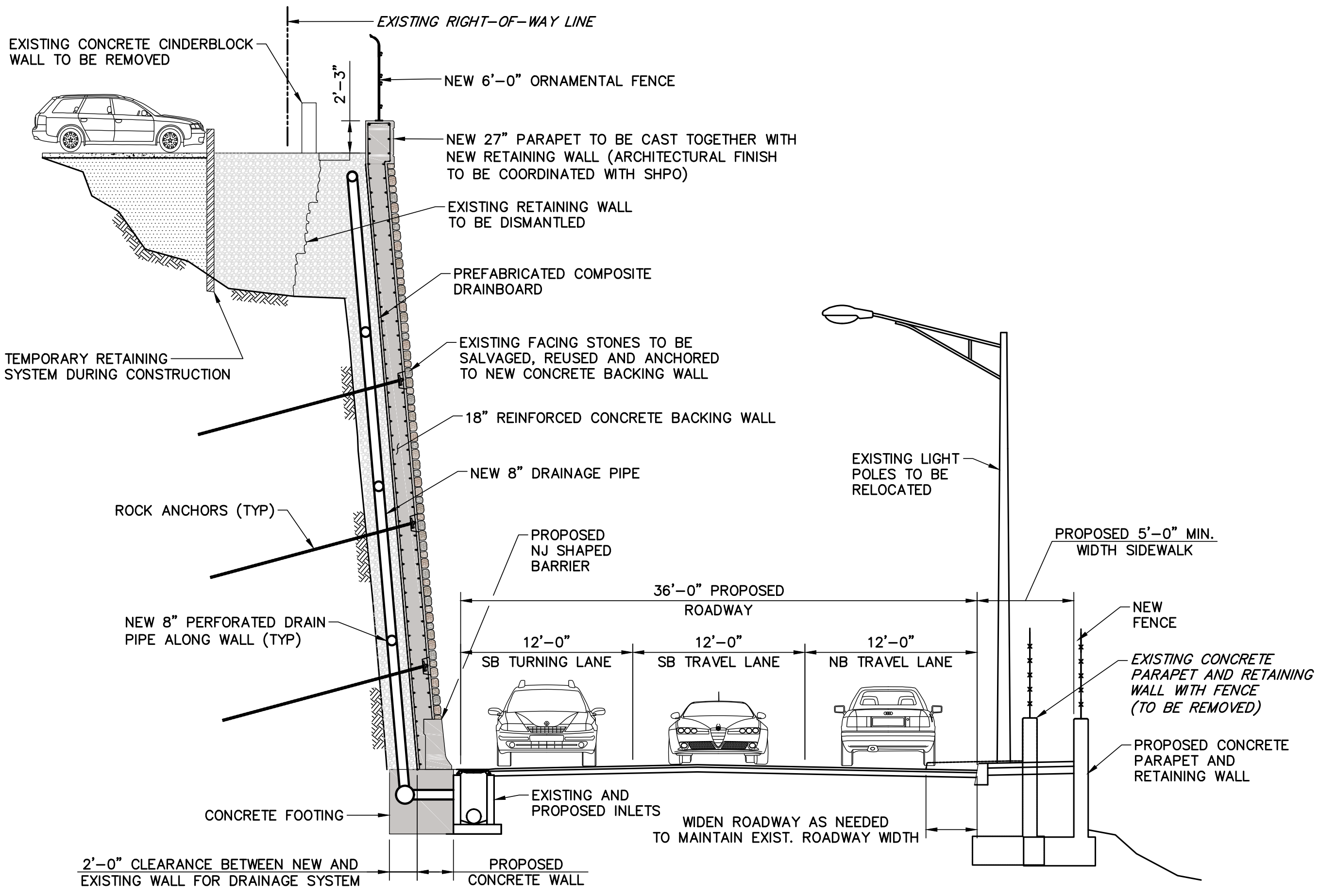


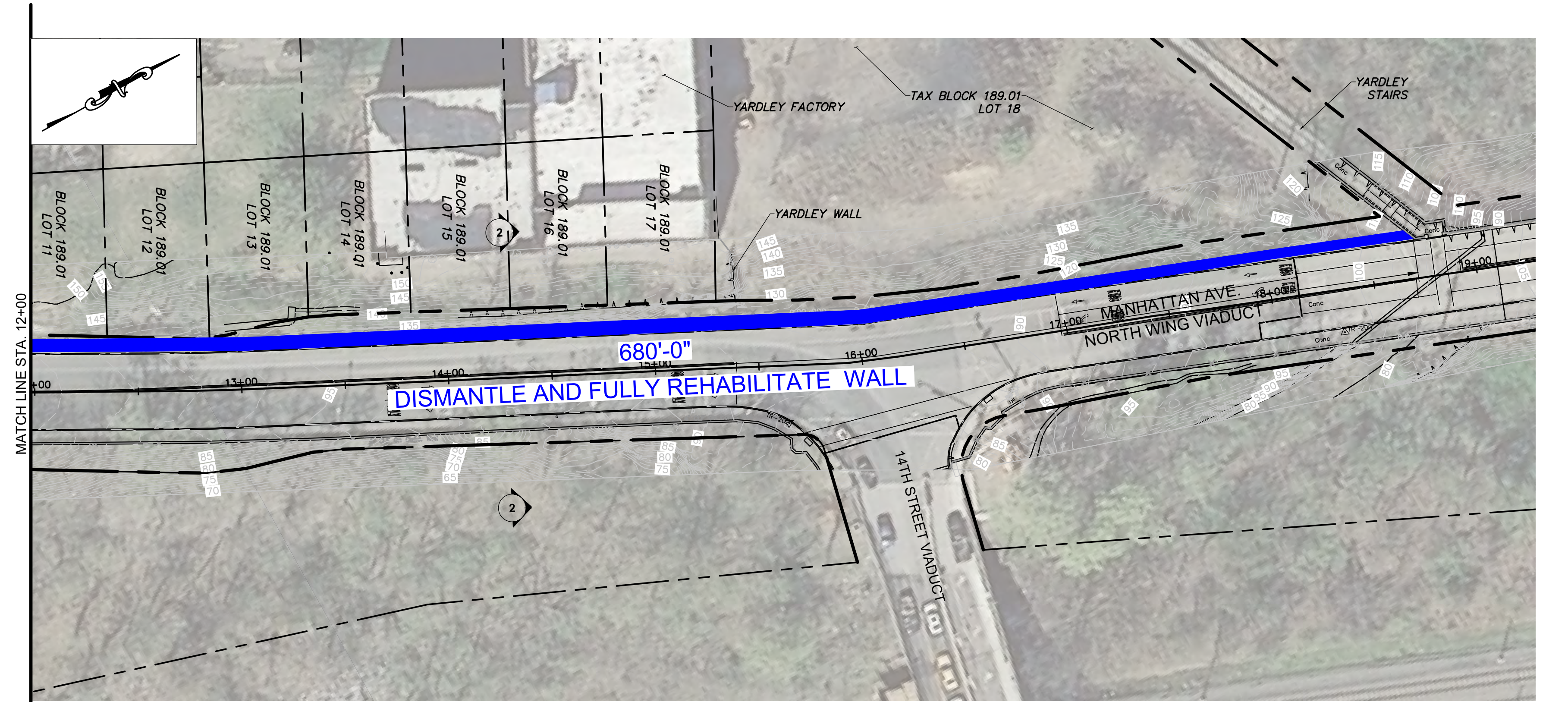
Revision	Checked By
Date	
No.	



**PLAN - SOUTH WALL**  
STA. 0+00 TO STA. 12+00  
SCALE 1" = 40'-0"



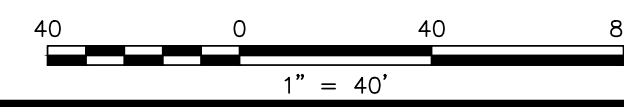
**SECTION 2-2**  
**(REPAIR ALTERNATIVE #3A)**  
N.T.S.



**PLAN - SOUTH WALL**  
STA. 12+00 TO STA. 19+00  
SCALE 1" = 40'-0"

**LEGEND**

- REPOINTING/RECONSTRUCTION (REPAIR ALTERNATIVE #1C)
- CONSTRUCT NEW RETAINING WALL IN FRONT OF EXISTING WALL (REPAIR ALTERNATIVE #2)
- DISMANTLE AND FULLY REHABILITATE EXISTING RETAINING WALL (REPAIR ALTERNATIVE #3)
- SHOTCRETE REPAIR
- OVERLAY EXISTING CONCRETE WALL WITH STONE



**FPA**  
**FRENCH & PARRELLO**  
ASSOCIATES

Corporate Office  
1800 Route 34, Suite 101  
Wall, NJ 07719  
732.312.9800  
Regional Offices  
Hackettstown, NJ  
New York, NY

**PRELIMINARY**

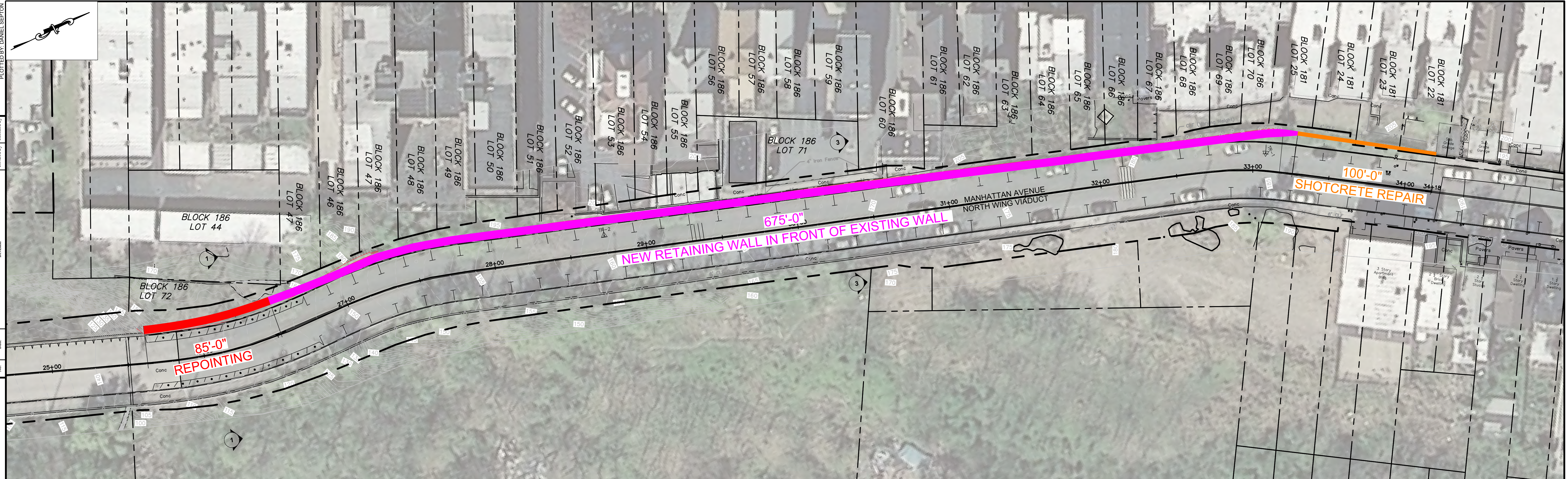
WILLIAM C. PYONTEK, PE, PP  
PROFESSIONAL ENGINEER, NJ LIC. No. 29668

<b>PPA OVERVIEW - SOUTH WALL</b>			
FOR THE RETAINING WALL & SLOPE STABILIZATION IMPROVEMENTS ALONG MANHATTAN AVENUE			
IN THE CITY OF UNION CITY HUDSON COUNTY, NEW JERSEY			
DATE:	DESIGNED BY:	DRAWN BY:	PROJECT NUMBER:
			12277.001
SCALE:	CHECKED BY:	CHECKED BY:	SHEET:
AS SHOWN			1 of

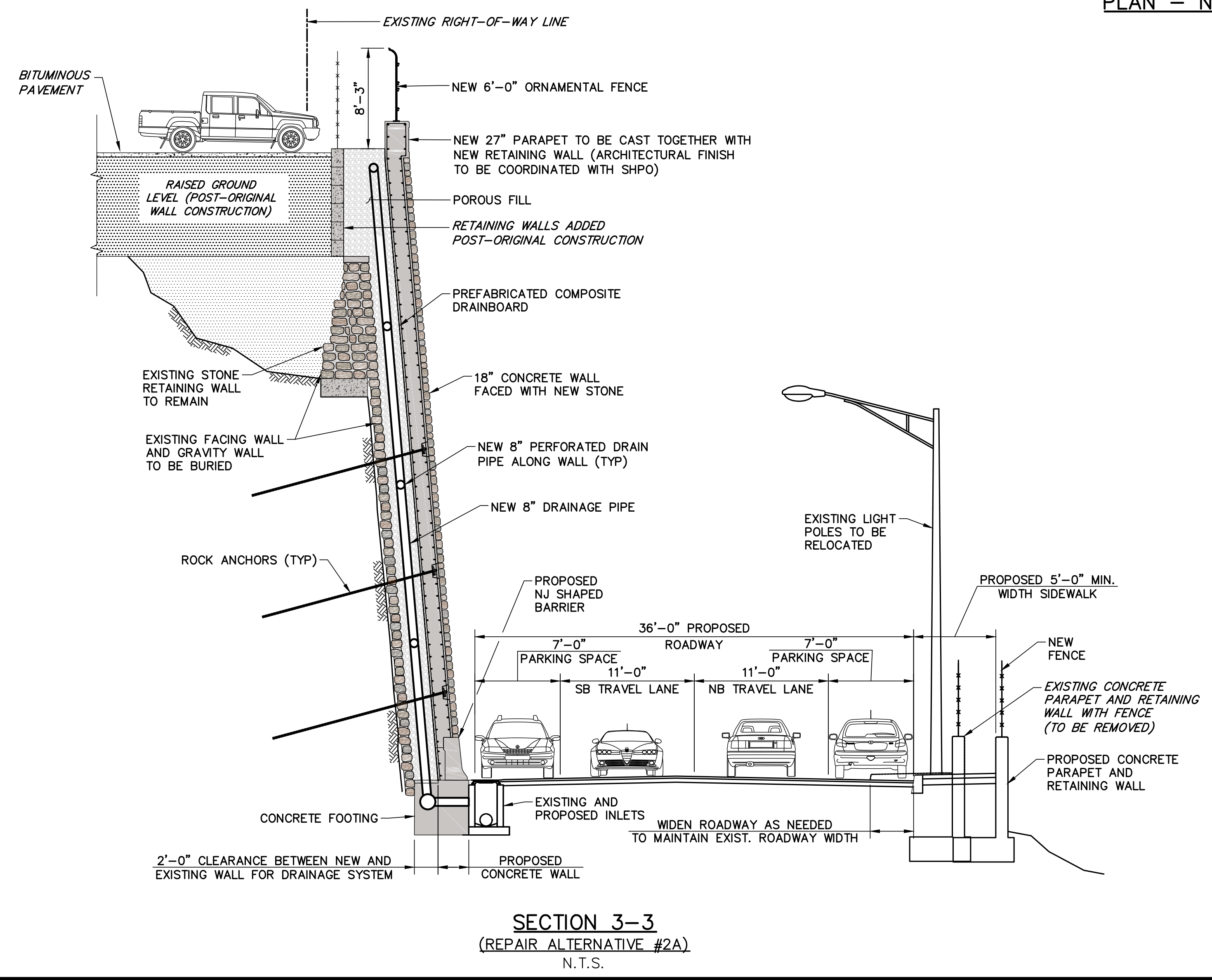


01/26/2020 10:08:58 AM  
PLOTTED BY DANIEL SEPTON

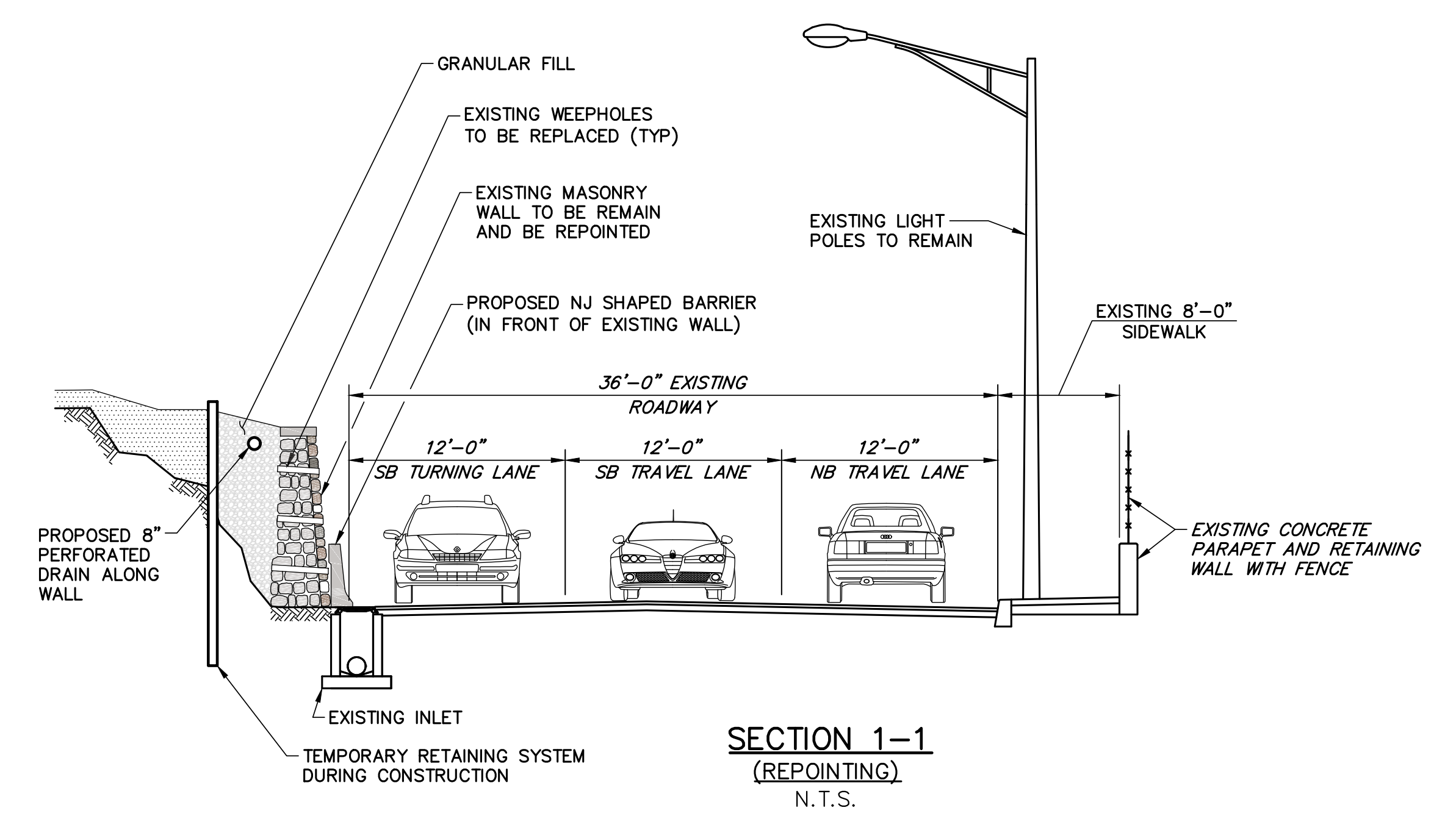
Checked By  
Reviewed By  
Revision  
Date  
No.



PLAN - NORTH WALL - STA. 25+65 TO STA. 34+18  
SCALE 1" = 30'-0"



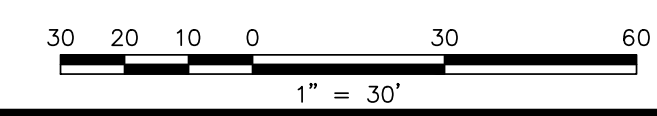
SECTION 3-3  
(REPAIR ALTERNATIVE #2A)  
N.T.S.



SECTION 1-1  
(REPOINTING)  
N.T.S.

LEGEND

- REPOINTING/RECONSTRUCTION (REPAIR ALTERNATIVE #1C)
- CONSTRUCT NEW RETAINING WALL IN FRONT OF EXISTING WALL (REPAIR ALTERNATIVE #2)
- DISMANTLE AND FULLY REHABILITATE EXISTING RETAINING WALL (REPAIR ALTERNATIVE #3)
- SHOTCRETE REPAIR
- OVERLAY EXISTING CONCRETE WALL WITH STONE



**FPA**  
FRENCH & PARRELLO  
ASSOCIATES

Corporate Office  
1800 Route 34, Suite 101  
Wall, NJ 07719  
732.312.9800

Regional Offices  
Hackettstown, NJ  
New York, NY

**PRELIMINARY**

WILLIAM C. PYONTEK, PE, PP  
PROFESSIONAL ENGINEER, NJ LIC. No. 29668

PPA OVERVIEW - NORTH WALL			
FOR THE RETAINING WALL & SLOPE STABILIZATION IMPROVEMENTS ALONG MANHATTAN AVENUE			
IN THE CITY OF UNION CITY HUDSON COUNTY, NEW JERSEY			
DATE:	DESIGNED BY:	DRAWN BY:	PROJECT NUMBER: 12277.001
SCALE: AS SHOWN	CHECKED BY:	CHECKED BY:	SHEET: 2 of